

# INTERACT UNDERFLOOR POWER

## RANGE INTRODUCTION

Interact Underfloor Power is a low profile powertrack system catering for single and multi-circuit applications, specifically designed to ensure a fast and simple installation.

It is suitable for standard, clean earth, uninterrupted or dedicated power supplies and allows power throughout the building.

### HOW TO SPECIFY

A low profile 63A underfloor powertrack system to cater for single and multi-circuit applications. Snap fast crocodile joints to ensure fast and simple installation with provision for 300mm socket spacing's. Key and colour coded tap-offs and sockets used to prevent cross pole contamination.

### FEATURES & BENEFITS

#### **PATENTED 'SNAP FAST' CROCODILE JOINTS**

Ensures fast and simple installation

#### **DUAL TAP-OFF FOR TWIN SYSTEM**

Offers simple 'single fit' installation

#### **KEY CODED AND COLOUR CODED TAP-OFFS**

Provides mechanical protection against cross pole contamination

#### **POWERTRACK WITH INTEGRAL END FEED AVAILABLE**

#### **COMPLIES WITH WIRING REGULATIONS**

Complies with both the requirements of BS EN 61534 and BS 7671:2014 IET Wiring Regulations (17th Edition)

#### **AVAILABLE IN 63A**

#### **5 YEAR GUARANTEE**

# Interact Under



## TRACK INTERLINKS AVAILABLE

- Flexibility to achieve maximum floor coverage



## AVAILABLE IN 63A

- Flexible to suit project requirements
- Lower rating opens opportunities for low cost installations

## KEY CODED TRACK

- Prevents inadvertent mixing of configurations

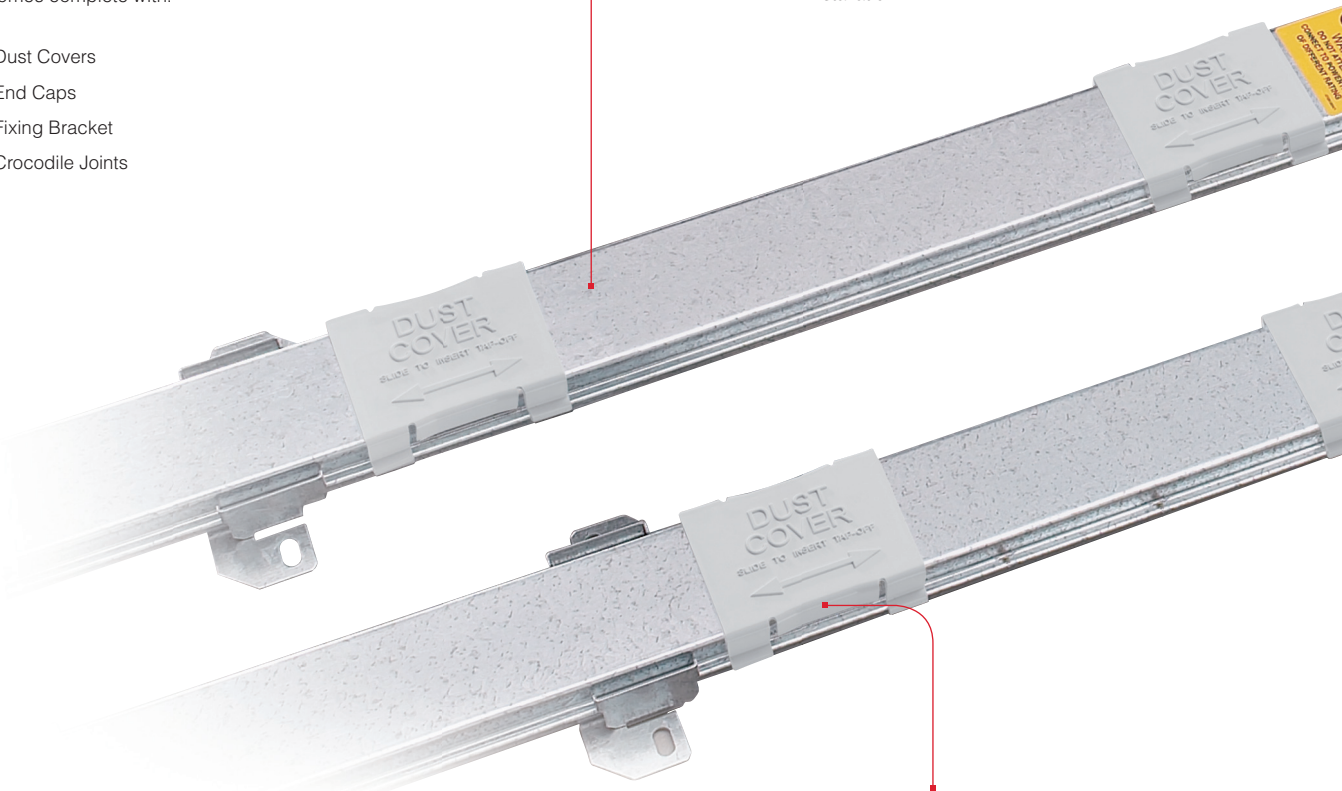
## SIMPLIFIED TRACK ORDERING

Track comes complete with:

- Dust Covers
- End Caps
- Fixing Bracket
- Crocodile Joints

## A GENUINE TWIN POWERTRACK SYSTEM

- Clean Earth and Standard Earth in one single track
- Single fitting of two circuits for speed of installation



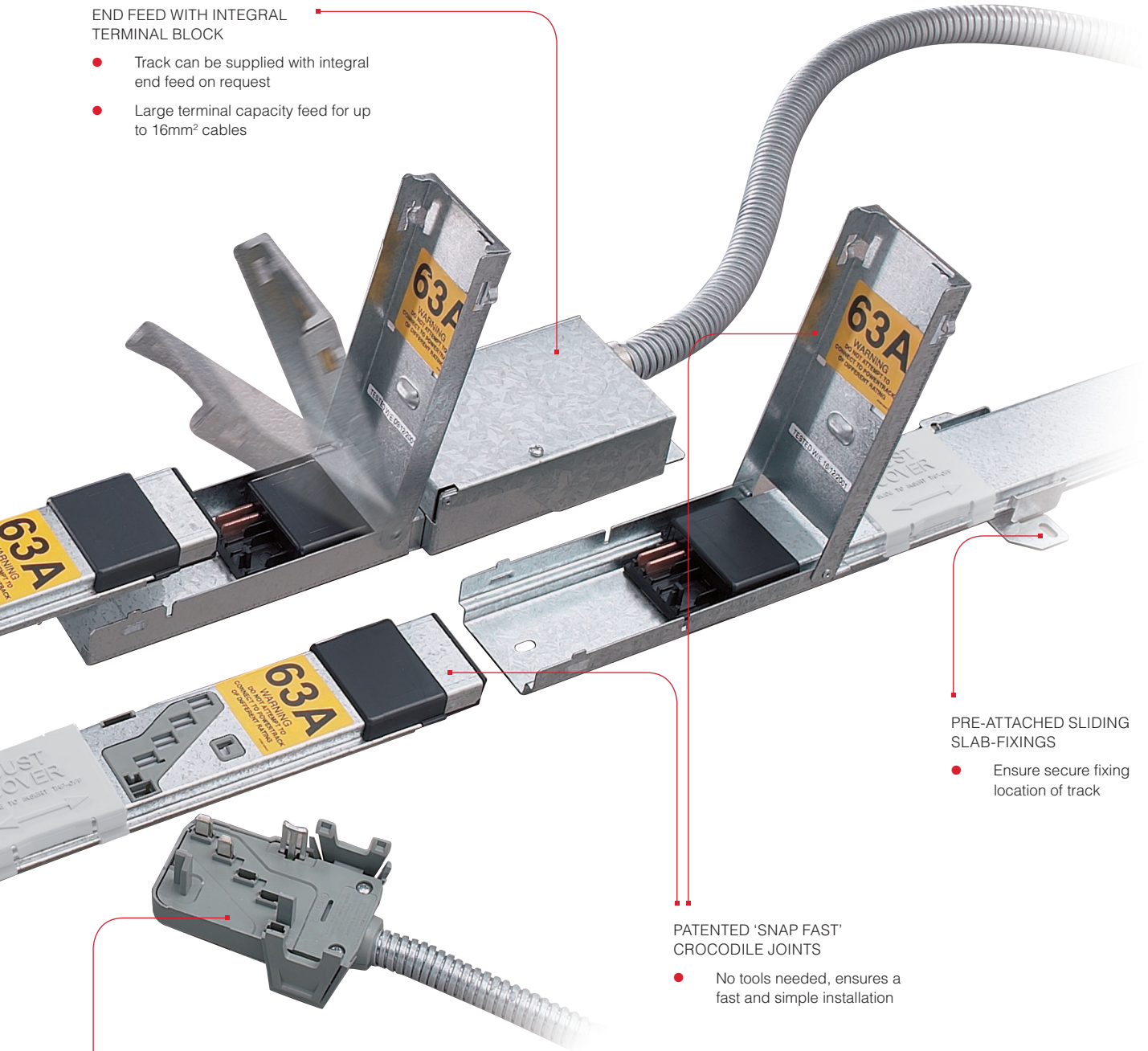
## PRE-ATTACHED SLIDING DUST COVERS

- Keeps track clean prior to and during installation

Designed for use with cablelink plus modular, cablelink plus single pan floorboxes, slab boxes, grommets and deskpod

### END FEED WITH INTEGRAL TERMINAL BLOCK

- Track can be supplied with integral end feed on request
- Large terminal capacity feed for up to 16mm<sup>2</sup> cables



### PRE-ATTACHED SLIDING SLAB-FIXINGS

- Ensure secure fixing location of track

### PATENTED 'SNAP FAST' CROCODILE JOINTS

- No tools needed, ensures a fast and simple installation

### KEY CODED AND COLOUR CODED TAP-OFFS AND SOCKETS

- Provides mechanical protection against cross pole contamination

### SOCKET SPACINGS

- 300mm socket spacings
- Enables tap-off to be fitted at regular intervals

# Interact Under

## 63 AMP SYSTEM

### 63 Amp Track



STANDARD GREY  
SPN



AUX GREEN SINGLE  
PHASE



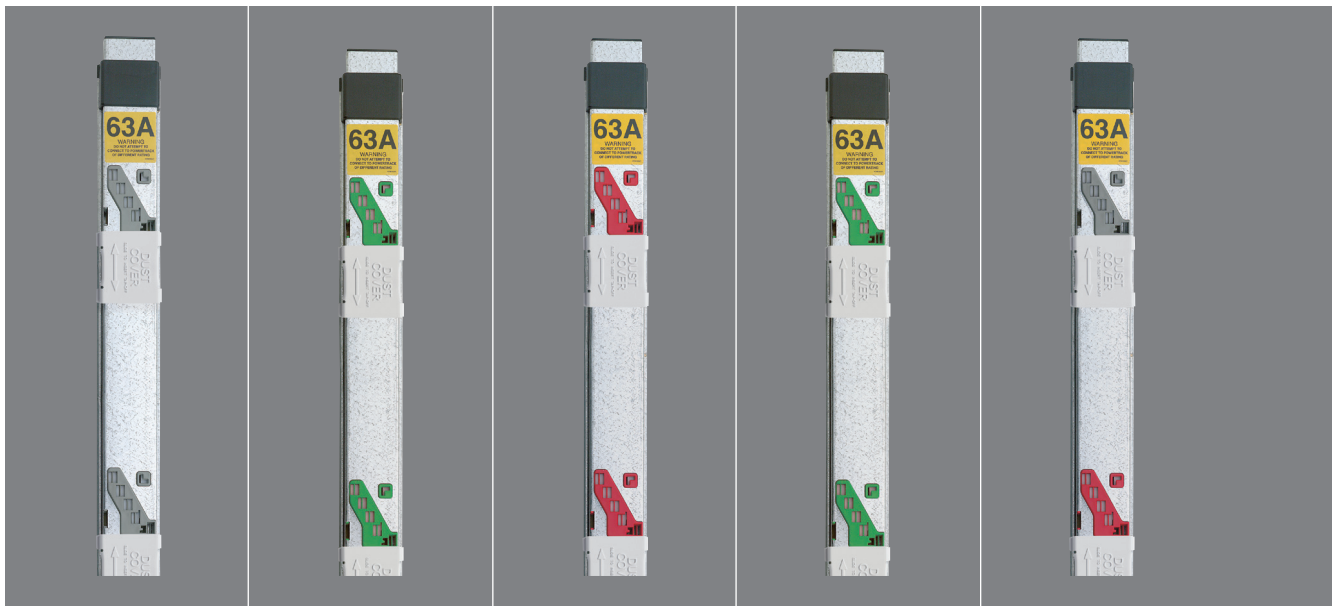
CLEAN EARTH  
RED CE



3 PHASE GREEN TPN



DUAL CE & STD RED  
/ GREY DUAL



### 1.2m TRACK

PE IS EARTHED TO CASE

PE IS EARTHED TO CASE

PITCH 300MM 4 SOCKETS	<b>UB61233GRY</b>	<b>UB61233GRN</b>	<b>UB61234RED</b>	<b>UB61235GRN</b>	<b>UB61236DUO</b>
--------------------------	-------------------	-------------------	-------------------	-------------------	-------------------

### 2.4m TRACK

PITCH 300MM 8 SOCKETS	<b>UB62433GRY</b>	<b>UB62433GRN</b>	<b>UB62434RED</b>	<b>UB62435GRN</b>	<b>UB62436DUO</b>
--------------------------	-------------------	-------------------	-------------------	-------------------	-------------------

### 3.6m TRACK

PITCH 300MM 12 SOCKETS	<b>UB63633GRY</b>	<b>UB63633GRN</b>	<b>UB63634RED</b>	<b>UB63635GRN</b>	<b>UB63636DUO</b>
---------------------------	-------------------	-------------------	-------------------	-------------------	-------------------

All 63A underfloor powertrack incorporate shutters and are rated to IP4X. Complies with the requirements of BS EN 61534.  
Track comes with the following slab mounting brackets: 1.2m = 1, 2.4m = 1, 3.6m = 2



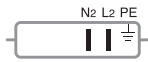
Technical Hotline  
+44 (0)1268 563720

# Interact Under

FLOOR SYSTEMS  
**RAISED**

## 63 AMP SYSTEM

### 63 Amp System



STANDARD GREY



AUX GREEN



CLEAN EARTH RED



3 PHASE GREEN



DUAL CE & STD  
RED / GREY

## End Feeds



Standard Grey	Aux Green	Clean Earth Red	3 Phase Green	Dual CE & Std Red / Grey
STANDARD				
<b>UF63GRY</b>	<b>UF63GRN</b>	<b>UF64RED</b>	<b>UF65GRN</b>	<b>UF66DUO</b>
OPPOSITE END FEED				
<b>UF63GRYLH</b>	<b>UF63GRNLH</b>	<b>UF64REDLH</b>	<b>UF65GRNLH</b>	<b>UF66DUOLH</b>

Each opposite End Feed comes with an end cap to close off the powertrack run.  
Terminal Capacity = 16mm<sup>2</sup>.

## Integral Feed Track



Standard Grey	Aux Green	Clean Earth Red
1.2M* PITCH 300MM 4 SOCKETS		
<b>IFUB61233GRY</b>	<b>IFUB61233GRN</b>	<b>IFUB61234RED</b>
2.4M* PITCH 300MM 8 SOCKETS		
<b>IFUB62433GRY</b>	<b>IFUB62433GRN</b>	<b>IFUB62434RED</b>
3.6M* PITCH 300MM 12 SOCKETS		
<b>IFUB63633GRY</b>	<b>IFUB63633GRN</b>	<b>IFUB63634RED</b>

\* Nominal length of Interact Underfloor Power excluding feed section. Feed section is 100mm in length.

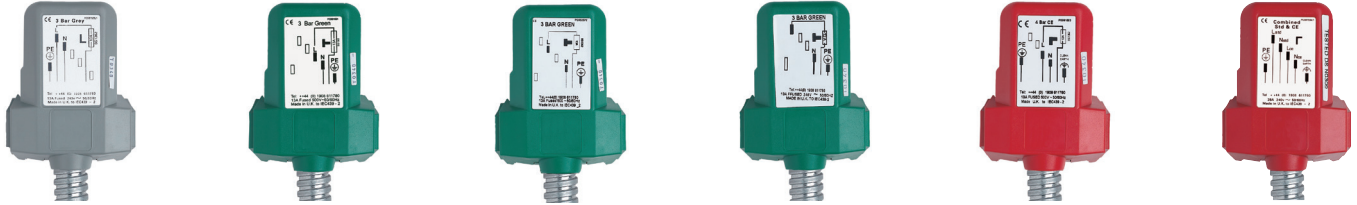
## Flexible Interlinks



Standard Grey	Aux Green	Clean Earth Red	3 Phase Green	Dual CE & Std Red / Grey
1.2M				
<b>UI6312GRY</b>	<b>UI6312GRN</b>	<b>UI6412RED</b>	<b>UI6512GRN</b>	<b>UI6612DUO</b>
2.4M				
<b>UI6324GRY</b>	<b>UI6324GRN</b>	<b>UI6424RED</b>	<b>UI6524GRN</b>	<b>UI6624DUO</b>
3.6M				
<b>UI6336GRY</b>	<b>UI6336GRN</b>	<b>UI6436RED</b>	<b>UI6536GRN</b>	<b>UI6636DUO</b>

## Interact Under

## Tap-off Leads

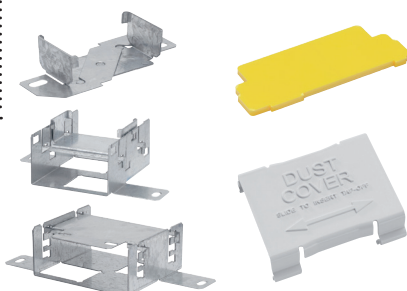


TYPE	PIN POSITION					CABLE / CONDUIT	CURRENT RATING	PROTECTION	3 METRE**		5 METRE*		KEY CODES†
									2.5MM <sup>2</sup>	4.0MM <sup>2</sup>	2.5MM <sup>2</sup>	4.0MM <sup>2</sup>	
<b>STANDARD GREY</b>				N2	L2	PE	LSF / LSF	13A	FUSED	UT31301C		UT51301C	L
							16MM	32A	UNFUSED		UT33201†††	UT53201†††	
							16MM	13A	FUSED	UT31301		UT51301	
<b>AUX / PHASE 1 GREEN</b>	PE	N1	L1				LSF / LSF	13A	FUSED	UT31302C		UT51302C	T
							16MM	32A	UNFUSED		UT33202†††	UT53202†††	
							16MM	13A	FUSED	UT31302		UT51302	
<b>PHASE 2 GREEN</b>	PE	N1			L2		LSF / LSF	13A	FUSED	UT31310C		UT51310C	T
							16MM	32A	UNFUSED		UT33210	UT53210	
							16MM	13A	FUSED	UT31310		UT51310	
<b>PHASE 3 GREEN</b>	PE	N1				L3	LSF / LSF	13A	FUSED	UT31311C		UT51311C	T
							16MM	32A	UNFUSED		UT33211	UT53211	
							16MM	13A	FUSED	UT31311		UT51311	
<b>ALL PHASE GREEN</b>	PE	N1	L1	L2	L3		16MM	28A	UNFUSED		UT33205	UT53205	
<b>CE RED</b>	CE	N1	L1			PE	LSF / LSF	13A	FUSED	UT31304C		UT51304C	L
							16MM	32A	UNFUSED		UT33204†††	UT53204†††	
							16MM	13A	FUSED	UT31304		UT51304	
<b>DUO (RED)</b>	CE	N1	L1	N2	L2	PE	20MM	28A	UNFUSED		UT33206	UT53206	

Tap-offs are supplied as single cables inside steel flexible conduit, except those with 'C' suffix, which are supplied with 3 or 4 core LSF flex, as appropriate. \* Unfused tap-offs in excess of 3m, must only be used on powertrack protected with a 32A (or less) circuit protection device. \*\* 3M tap offs. Stated length refers to length of wires within the unit, not the conduit length. Conduit length will be between 2.7 and 2.8 meters in length when fully extended. When un-extended, conduit length will decrease by a further 0.1 to 0.2 meters. Minimum length of un-extended conduit will be 2.5 meters.

This is to comply with BS7671:2008 17th Edition IET Wiring Regulations. † Key codes shown are from the perspective of the Power Track socket, the tap-off key code will be a mirror image when viewed from underneath. †† Add 'DE' suffix for Dual Earth High Integrity Earthing, e.g. UT51301DE. Unfused tap-offs – High Integrity Earthing as standard. Fused tap-offs – add '607' suffix for High Integrity Earthing by use of a single 4mm<sup>2</sup> earth conductor, e.g. UT51301607 ††† Neutrik tap-offs - add 'DEN' suffix for Dual Earth High Integrity Earthing with a neutrik connector e.g. UT33201DEN. For UT33204 and UT53204 add 'N' suffix for the neutrik connector

## Other Components



PART NO.	DESCRIPTION
<b>UK1</b>	Additional Slab Brackets
<b>UK3</b>	Additional End Plates
<b>UK5*</b>	Height Adjustable Slab Bracket – Track 17mm, 27mm And 39mm
<b>UK5F*</b>	Height Adjustable Slab Bracket – End Feed 17mm, 27mm And 39mm
<b>UKDC</b>	Additional Dust Cover

\* Fixing brackets should be positioned within 300mm from either end of a track run and either side of all joints. Minimum support requirement 3.6m length = 4 brackets, 2.4m length = 3 brackets, 1.2m length = 2 brackets.

†† In the published 17th Edition of the IET Wiring Regulations, these requirements are found in Regulation 543.7. (16th Edition = Section 607)